

Who We Are

The Indonesian Epidemiology Network (IEN) is an entity representing a group of institutions committed to finding solutions to population-based health problems through the application of epidemiological, social, and health management approaches. The Network promotes linkages among its members, local health policy makers, and program managers.

The Network was initiated in the view of the various socio-cultural, geographical, and economical aspects of Indonesian societies. The national health problems should be handled appropriately and best addressed through the development of local capacity to identify community health problems, to develop innovative programs, and to utilize the improved performance of district health services.

The representatives of 12 institutions in 6 provinces founded the Network in 1987. The IEN then evolved as an independent Non-Governmental Organization (NGO) in December 1994. The growing needs to work collaboratively within one umbrella led new institutions join IEN, making the number of its members increased to 31 institutions from 11 provinces on four major islands.

Vision

To develop a stronger network of health and social institutions

To promote and empower Indonesian communities in achieving a better health status through epidemiological and social approaches

Mission

Working together with the government, NGOs, national, and international agencies, the IEN empowers the network in implementing health strategies through the application of the health, epidemiology and social sciences to support the community for promoting a better health status



IEN first annual meeting (1988)

Objectives

To establish a systematic and efficient forum that facilitates communication, coordination, and sharing of ideas and experience to research planning/ management/ utilization among members, and between members and other related institutions particularly those of program policy makers and donor agencies

To help members develop an institutional research capacity on major national and regional health issues

Strategies

Providing mechanisms and forums, such as regular meetings, seminars, and training programs that bridge communication among members, between members and policy makers, and between members and other national as well as international agencies.

Publishing and distributing quarterly "Jurnal Epidemiologi Indonesia" as a means of exchanging and sharing of ideas, knowledge, skills, and experiences in research management and implementation among members, NGOs, and

individuals interested in health issues.

Providing technical assistance and consultation to its members on research management and various methodological issues by forming special committee or task force.

Facilitating communication among members through telephone, facsimile, electronic-mail services, and home-page.



One-day seminar on aging conducted by one of the IEN's members (1995)

Research Project

The IEN has been coordinating multi-center research projects involving its members. Some of the issues were related to reproductive health, STDs, HIV/ AIDS, DHF, Nutrition, Breastfeeding and Aging.

Scientific Meetings

In order to provide a forum for the members and other institutions to share and discuss ideas or experiences about the most current health issues, the IEN conducts annual scientific meeting. Due to efficiency, starting 1995 the meeting was conducted bi-annually. A management meeting follows every meeting where leaders of the institutions get together to discuss future plans and other managerial/operational issues of the Network.



Workshop on AIDS funded by the Ford Foundation (1992)

Training & Workshops

Various seminars/workshops and training programs have been conducted in order to upgrade the academic skills of its members. The main topics were related to research methodology and current health management issues.

Publications

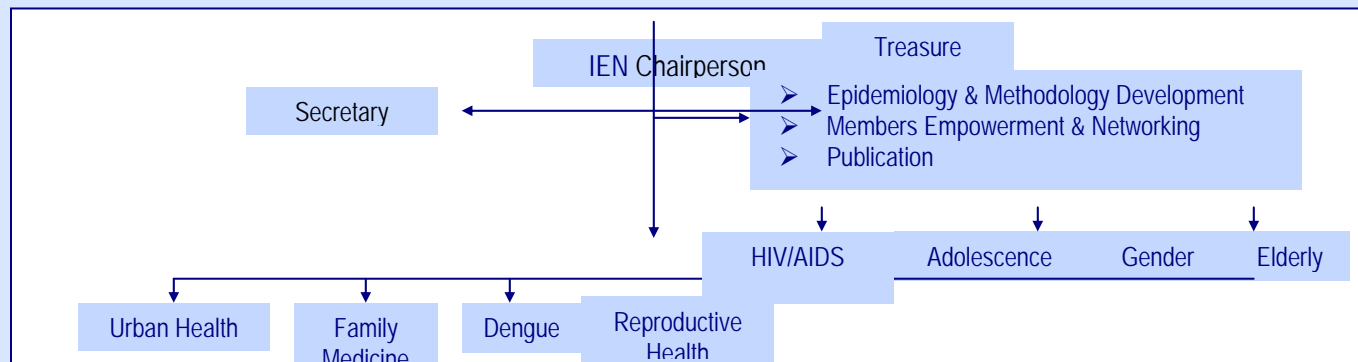
The IEN has published a number of research reports conducted by its members. They mostly related to the HIV/AIDS, STDs, and reproductive health issues. Furthermore, the IEN has regularly published its Quarterly Indonesian Journal of Epidemiology.

Structural Organization

The main of the Network is the IEN Steering Committee. The Committee comprises leaders of each IEN member. One of its responsibilities is to elect the IEN chairperson for a two-year period; a chairperson can be re-elected for the second time.

In consultation with the Steering Committee, the chairperson appoints senior individuals for the positions of Board of Directors, including the positions for 3 sections and 8 sub-committees. The Directors are called for advice and supervision of the IEN overall operations.

INDONESIAN EPIDEMIOLOGY NETWORK



For more information, please contact us at:

Indonesian Epidemiology Network
C/o. P4K Badan Litbangkes Depkes RI
Jl. Percetakan Negara No. 23A, Jakarta 10560
+62 (21) 426-6112, Fax: (21) 426-6063,

E-mail: jen-ien@indo.net.id
Home Page: <http://www.jen.or.id>